



The all-in-one *Embedded WebGUI* Solution



- Web based user interfaces for touch LCDs
- Local GUI on Embedded Devices
- Full remote access from LAN and Web
- From all types of Web enabled devices
- Fully platform independent
- High-end customized graphics





The *Embedded WebGUI* Solution

IEL Elektronik-Systeme GmbH

IEL is specialized in the development and production of customer specific measuring and control systems with innovative high quality HMI solutions optimized for remote access from the Internet.

One important field of application, amongst others, is the control of swimming pools.

Contact

Michael Schäfer
mail@ielgmbh.de
www.ielgmbh.de

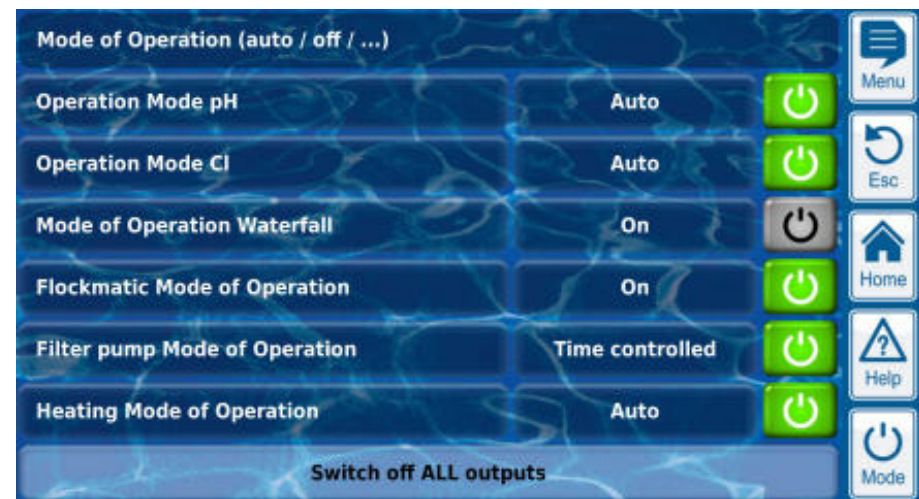




The *Embedded WebGUI* Solution

Standard Menus

- Build from standard building blocks at runtime
- Variable contents depending on system states
- Icon or text based menus

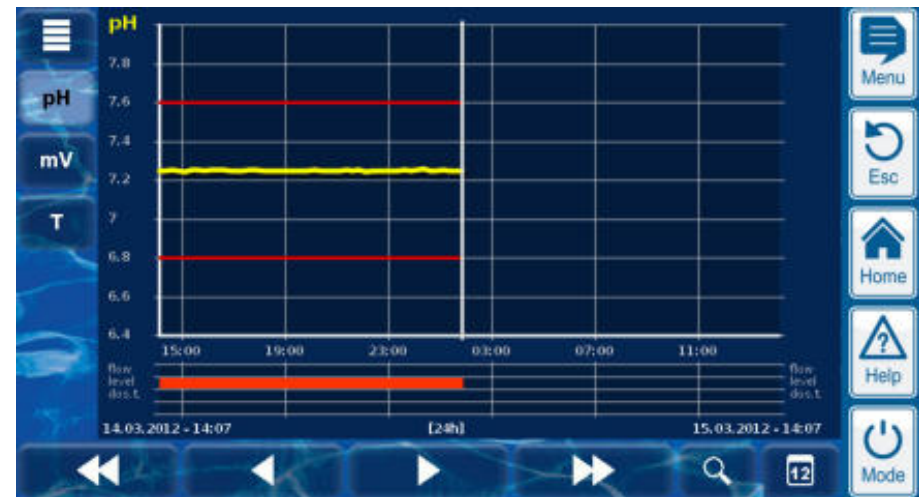
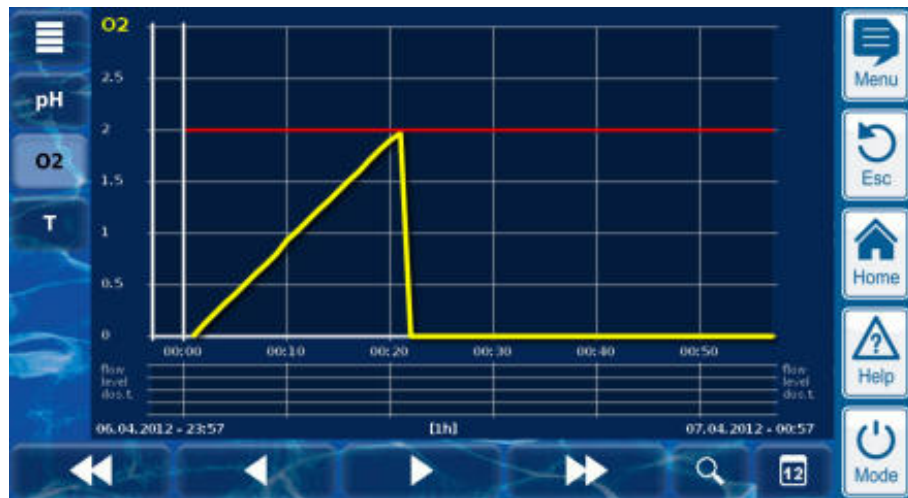




The *Embedded WebGUI* Solution

Measurement graph

- Graphical display of measurement readings
- Additional display of alarms or system states
- Local data storage on Embedded Device

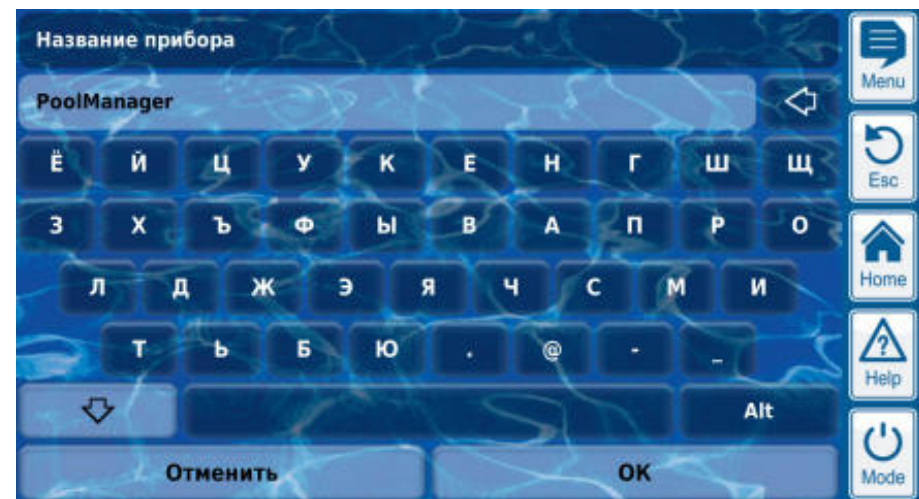




The *Embedded WebGUI* Solution

Input menus

- Standard menus to enter different types of data
- Numeric, enumeration and text parameters
- Date, time, IP address, phone number, ...

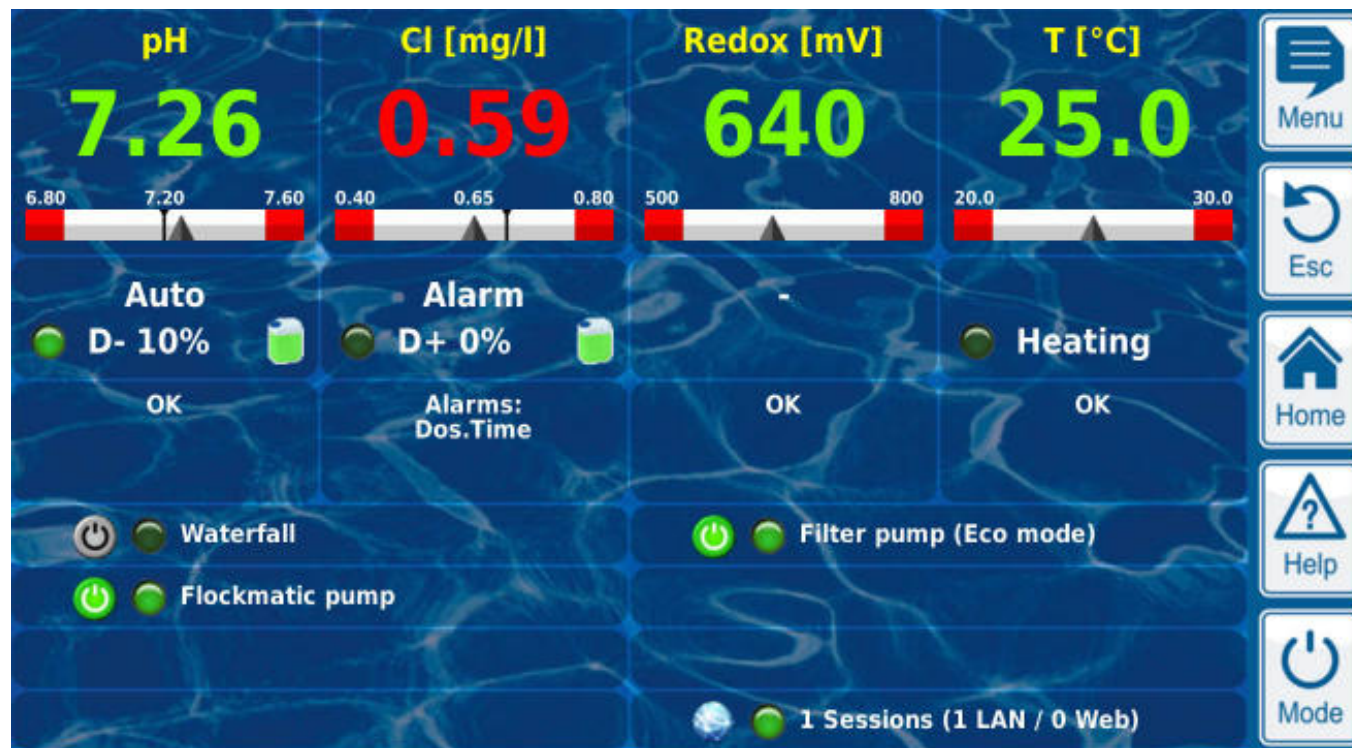




The *Embedded WebGUI* Solution

Customized menus

- Customer and application specific menus
- View all important data at a glance





The *Embedded WebGUI* Solution

Individual customized styles



Individual menu styles

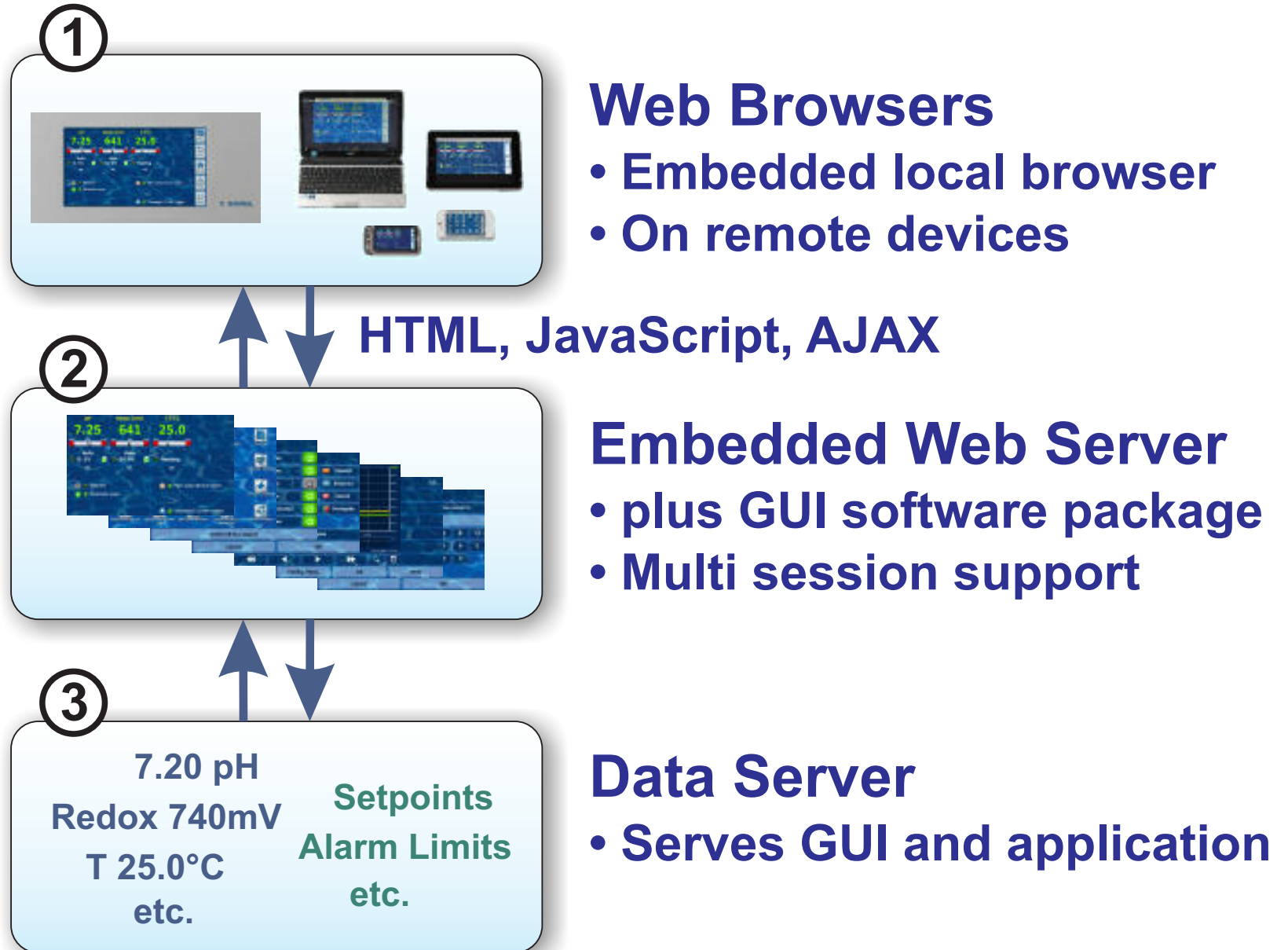
Individual button styles

Individual background images



The *Embedded WebGUI* Solution

Concept Overview





The *Embedded WebGUI* Solution

Building menus from standard building blocks

e_num_ph
value: 7.25
min: 5.00
max: 9.00
step: 0.01
label: pH
unit: pH



data
model

standard menu
building blocks

standard menu
built at runtime